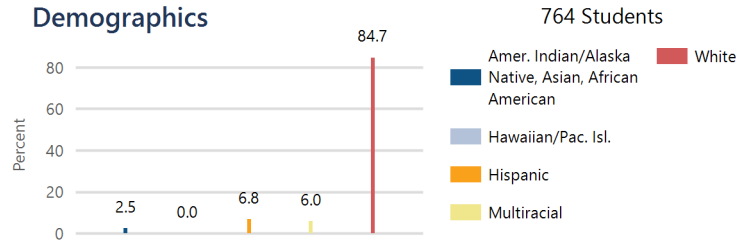




Perry Public Schools USD 343

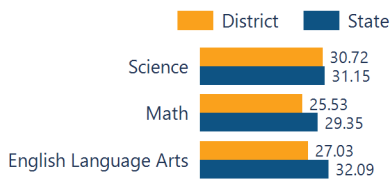
205 W Bridge St, Perry, KS 66073
 (785) 597-5138
<http://www.usd343.net>

System Accreditation Status: **Accredited**
 ESSA Annual Meaningful Differentiation: **Approaching**
 Grades: **PK-12,NG**
 Superintendent: **J.B. Elliott**



Academically Prepared for Postsecondary Success

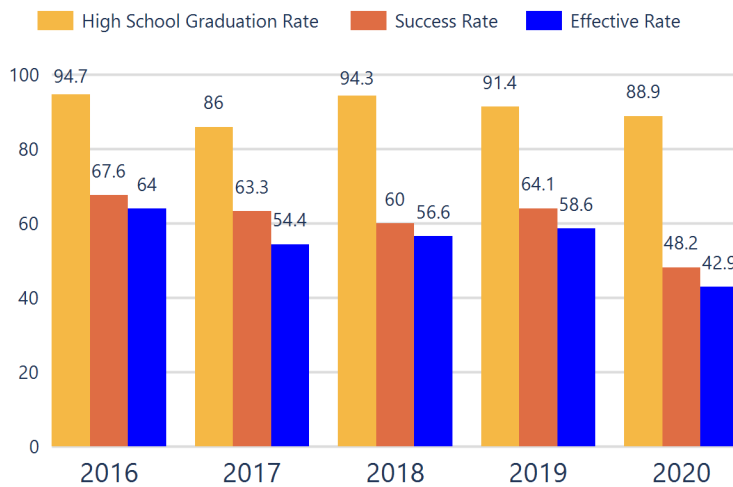
The percentage of students who scored at Levels 3 and 4 on the state assessment.



District Kansans Can Star Recognition

	Gold	Silver	Bronze	Copper
Social-Emotional Growth				★
Kindergarten Readiness			★	
Individual Plan of Study				
Academically Prepared for Postsecondary				
Civic Engagement				
High School Graduation		★		
Postsecondary Success				★

District Postsecondary Effectiveness



Kansans CAN lead the world!
 Graduation **95%**
 Effective Rate 70-75%

Five-Year Graduation Avg **91.2%**

Five-Year Success Avg **61.0%**

Five-Year Effective Avg **55.7%**

95% Confidence Interval for the Predicted Effectiveness Rate **56.7 - 59.5%**

- The numerator and denominator in the Five-Year Averages contain total student counts over five years (2016-2020) and are rounded to the nearest whole number.
- Graduation Rate:** The 4-year adjusted cohort graduation rate is the number of students who graduate in four years with a regular high school diploma divided by the number of students who entered high school as 9th graders four years earlier (adjusting for transfers in and out).
 - Success Rate:** A student must meet one of the four following outcomes within two years of High School graduation.
 - Student earned an Industry Recognized Certification while in High School.
 - Student earned a Postsecondary Certificate.
 - Student earned a Postsecondary Degree.
 - Student enrolled in Postsecondary in both the first and second year following High School graduation.
 - Effective Rate:** The calculated Graduation Rate multiplied by the calculated Success Rate.

GRADUATION RATE

The four-year adjusted cohort graduation rate is the percentage of students in a cohort, adjusted for transfers into and out of the school, district, or state, who graduate with a regular high school diploma within four years of entering high school.

88.3% State: 89.3

ATTENDANCE RATE

Rate at which students are present at school, not including excused or unexcused absences.

91.9% State: 92.1

CHRONIC ABSENTEEISM

Percentage of students who miss 10% or more of school days per year either with or without a valid excuse.

27.5% State: 25.4

DROPOUT RATE

The dropout rate is calculated annually and reflects the number of seventh–twelfth grade students who drop out in any one school year. A dropout is any student who exits school between October 1 and September 30 with a dropout EXIT code AND does not re-enroll in school by September 30.

0.5% State: 1.4

State: District ESSA Operating Expenditures Per Pupil

Expenditures reflect those for the normal day-to-day operation of schools as reported by the Local Education Agency. The following expenditures are excluded: capital outlay, school construction and building improvements, equipment and debt services.

\$13,426

State: \$13,814

[Click here for State Financial Accountability.](#)



District Academic Success

State Assessment scores are displayed by student subgroup over three years time in three subjects: Math, English Language Arts (ELA), and Science. Assessment scores are not available for the 2020 school year.

ALL STUDENTS

	2019-20			2020-21			2021-22		
	Math	ELA	Sci	Math	ELA	Sci	Math	ELA	Sci
Level 1	N/A	N/A	N/A	33.24	34.13	34.37	35.90	35.95	39.66
Level 2	N/A	N/A	N/A	42.62	35.21	28.75	38.56	37.00	29.60
Level 3	N/A	N/A	N/A	17.96	23.92	27.50	19.68	21.52	20.11
Level 4	N/A	N/A	N/A	6.16	6.72	9.37	5.85	5.51	10.61

FREE AND REDUCED LUNCH STUDENTS

	2019-20			2020-21			2021-22		
	Math	ELA	Sci	Math	ELA	Sci	Math	ELA	Sci
Level 1	N/A	N/A	N/A	39.58	43.15	38.63	42.10	56.25	52.50
Level 2	N/A	N/A	N/A	38.54	36.84	31.81	45.26	25.00	30.00
Level 3	N/A	N/A	N/A	16.66	14.73	25.00	9.47	14.58	12.50
Level 4	N/A	N/A	N/A	5.20	5.26	4.54	3.15	4.16	5.00

STUDENTS WITH DISABILITIES

	2019-20			2020-21			2021-22		
	Math	ELA	Sci	Math	ELA	Sci	Math	ELA	Sci
Level 1	N/A	N/A	N/A	61.42	75.36	73.07	66.66	71.66	68.00
Level 2	N/A	N/A	N/A	25.71	14.49	19.23	26.66	20.00	20.00
Level 3	N/A	N/A	N/A	10.00	7.24	7.69	6.66	8.33	4.00
Level 4	N/A	N/A	N/A	2.85	2.89	0.00	0.00	0.00	8.00

AFRICAN-AMERICAN STUDENTS

	2019-20			2020-21			2021-22		
	Math	ELA	Sci	Math	ELA	Sci	Math	ELA	Sci
Level 1	N/A	N/A	N/A	N/A	N/A	N/A	N/A	N/A	N/A
Level 2	N/A	N/A	N/A	N/A	N/A	N/A	N/A	N/A	N/A
Level 3	N/A	N/A	N/A	N/A	N/A	N/A	N/A	N/A	N/A
Level 4	N/A	N/A	N/A	N/A	N/A	N/A	N/A	N/A	N/A

HISPANIC STUDENTS

	2019-20			2020-21			2021-22		
	Math	ELA	Sci	Math	ELA	Sci	Math	ELA	Sci
Level 1	N/A	N/A	N/A	33.33	35.29	N/A	42.30	61.53	41.66
Level 2	N/A	N/A	N/A	50.00	52.94	N/A	42.30	26.92	41.66
Level 3	N/A	N/A	N/A	16.66	11.76	N/A	11.53	11.53	8.33
Level 4	N/A	N/A	N/A	0.00	0.00	N/A	3.84	0.00	8.33

N/A: To protect student privacy, when a subgroup has fewer than 10 students, the data are not displayed.

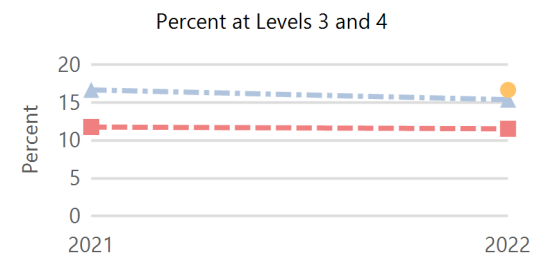
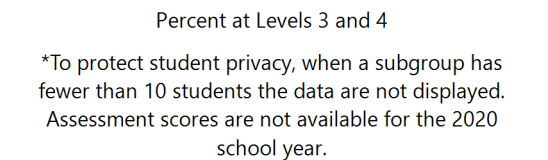
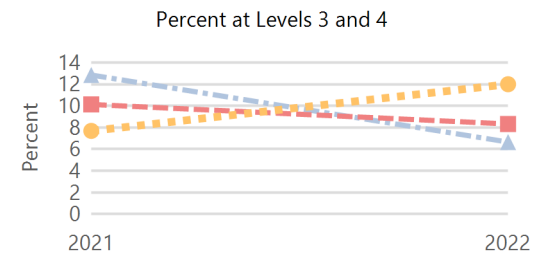
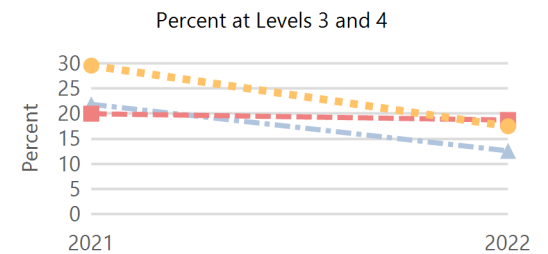
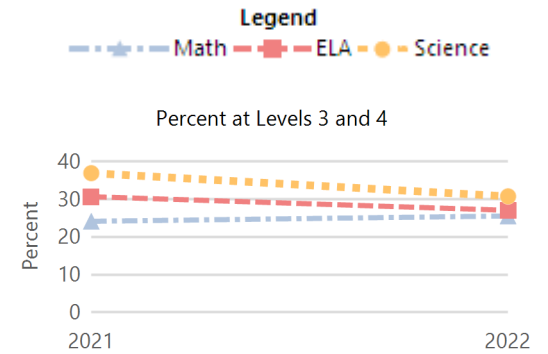
ACT Performance (2022 School Year)

ACT is a national college admissions exam that includes subject level tests in English, Math, Reading and Science. Students receive scores that range from 1 to 36 on each subject and an overall Composite score. This report provides the average Composite score for the 2022 graduating seniors who took the ACT as sophomores, juniors, or seniors.

Note: Not all eligible students completed an ACT.



Academically Prepared for Postsecondary Success



District	21.4
State	19.8